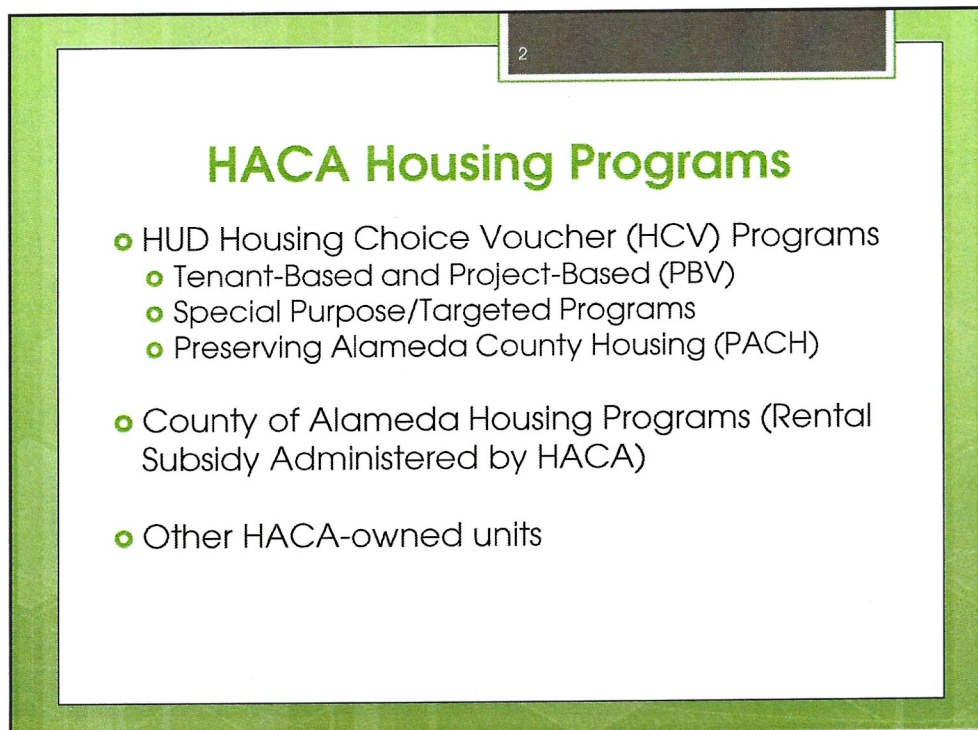


1



2

HACA HCV Program Allocations		
HCV Program Type	Program (Target Population)	Total Vouchers
Traditional HCV	Traditional HCV (serves low-income, not targeted)	6,293
Special Purpose	Veterans Affairs Supportive Housing (VASH) (homeless veterans)	415
Special Purpose	Non-Elderly Disabled Persons (NED) (exiting institutions)	10
Special Purpose	Mainstream (Non-elderly persons with disabilities)	289
Special Purpose	Foster Youth to Independence (FYI) (youth 18-24 yrs exiting foster care)	16
Total Standard HCV Allocation		7,023
Limited Program	Emergency Housing Vouchers (EHV) (referred by County of Alameda Continuum of Care)	252

3

Project-Based Vouchers (PBVs)		
<ul style="list-style-type: none"> PBVs are a subset of HACA's standard HCV allocation (7,023) <ul style="list-style-type: none"> HUD allows discretion to allocate 20% as PBVs Additional 10% allowed for PBVs for targeted populations (homeless, elderly/disabled w/ services, veterans, low poverty census tract) HACA baseline allocation for PBVs: 6,903 <ul style="list-style-type: none"> excludes 120 VASH/RAD PBV units 		

4

5

Current PBV Caps/Utilization

	PBV Cap	PBVs Awarded / Under Contract	PBVs Remaining in Cap
20% Limit	1,380	460	920
Additional 10% Limit (for target populations)	690	335	355
Total	2,070	795	1,275

5

6

PBVs by Location

City	Awarded/ Under Contract	Target Population
Albany	5	Homeless
Castro Valley	43	Homeless/Mainstream/VASH
Dublin	106	Elderly/Families (25 VASH excluded from cap)
Emeryville	52	Disabled/Families (35 RAD excluded from cap)
Fremont	145	Disabled, Elderly, Families, Homeless, (25 VASH excluded from cap)
Hayward	114	Disabled, Elderly, Families, Homeless
Newark	80	Elderly, Homeless, VASH
Pleasanton	50	Elderly
San Leandro	90	Disabled, Elderly, VASH
Union City	230	Elderly, Family (35 RAD excluded from cap)
Total	915	(includes 120 excluded from cap calculations)

6

7

Current HCV Program Capacity (4/1/23)

- HACA currently serves 6,615 households (leased vouchers)
 - Does not include 200 leased EHV's
- 408 vouchers remaining in allocation for:
 - Applicants currently searching w/ vouchers
 - PBV vacancies
 - PBVs in pipeline (149 awarded pending)
- Current HCV Wait List Applicants: 3,561 (2015)

7

8

HCV Program Expansion Outlook

- In the past 15 years, HUD has not significantly increased standard HCV program allocations
- HUD is focused on Special Purpose Vouchers and other targeted programs
 - HACA applies for funding when feasible

8

9

County of Alameda Programs Administered by HACA

- County contracts with HACA to administer several housing programs (198 vouchers/units)
 - HACA's role: administering rental subsidies and security deposits, processing damage claims, and conducting HQS inspections
- County reimburses HACA for housing related payments and also pays HACA administrative fees
- County provides supportive services for participants through separate contracts with service agencies

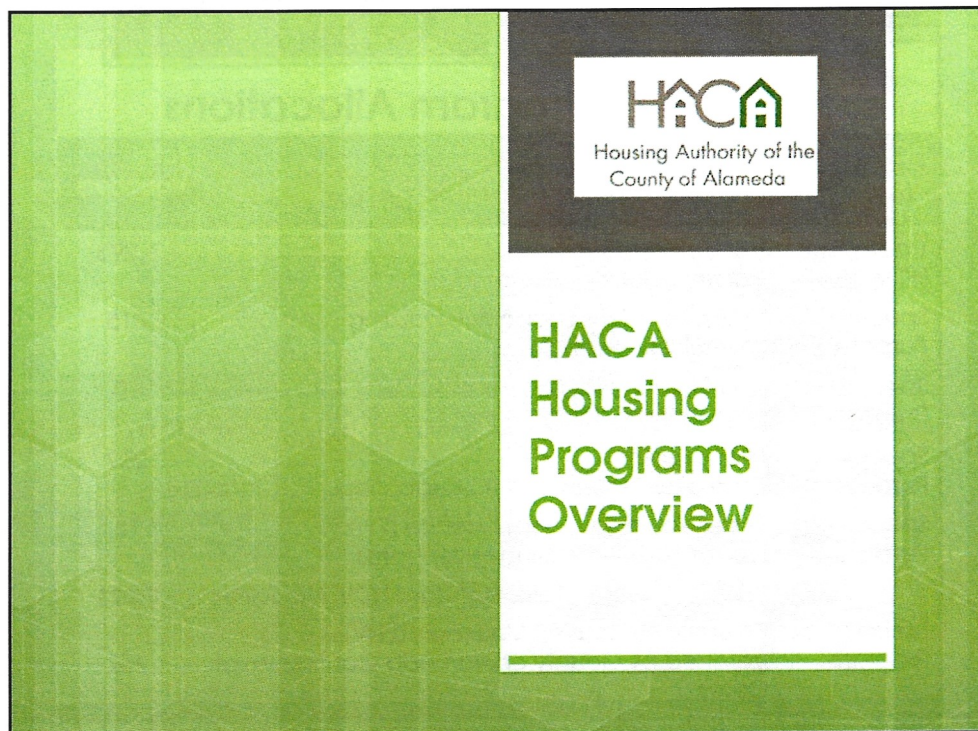
9

10

County of Alameda Programs Administered by HACA

Program	Total Vouchers/Units	Description
Shelter Plus Care	107	Funded by HUD Continuum of Care; serves homeless/persons with mental disabilities; tenant-based vouchers
Homes for Wellness	18	County funded; serves chronically homeless persons with a disability; tenant-based vouchers
Health Care Services Agency (HCSA) Programs	73	Funded by County Continuum of Care/Mental Health Services Act/Other County and State funds; serves homeless, persons with a disability or long-term mental illness, households with serious health issues (some in skilled nursing facilities); tenant-based vouchers and hard units

10



1

2

HACA Housing Programs

- HUD Housing Choice Voucher (HCV) Programs
 - Tenant-Based and Project-Based (PBV)
 - Special Purpose/Targeted Programs
 - Preserving Alameda County Housing (PACH)
- County of Alameda Housing Programs (Rental Subsidy Administered by HACA)
- Other HACA-owned units

2