



commercial  
division

# Toyota Sienna Side Entry

## MANUAL IN-FLOOR RAMP

Utilizing over 20 years of experience in building in-floor ramp systems, VMI has combined a manual side entry ramp with Toyota Sienna's unmatched reliability. This vehicle is ideal for taxi, paratransit and non-emergency medical transport where maximum passenger capacity and minimal maintenance is desired.



2021+ Model Year Vans Are Now Hybrid!

## Toyota Sienna Manual Side Entry Benefits



### Access360® Maneuverability

Clean, uncluttered interior with the industry's most interior space for maximum wheelchair maneuverability and enhanced visibility.

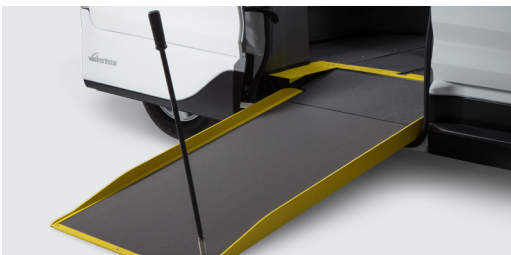
< 2020 Toyota interior shown with optional mid-row seat.



### Comfort and Convenience

The Sienna's unobstructed entrance provides comfortable ambulatory passenger boarding and the vehicle's slip resistant and easy to clean commercial grade Altro flooring is convenient.

< 2021 Toyota Hybrid includes patented wheel well covers as standard.



### Leading In-Floor Ramp

VMI's #1 in-floor ramp system is stowed within the vehicle floor, providing drivers the convenience and flexibility to transport more passengers while deploying the ramp only when needed. 2" rigid side rails along with ramp and floor LED illumination provide additional visibility and security.

< Standard flares only available on 2020 model year Toyota and older.



### Simple Manual Ramp

VMI's manual ramp system on the Toyota Sienna is ideal for commercial use. This vehicle's patented easy grip handle allows drivers to operate the ramp without bending or heavy lifting and needs minimal maintenance.

VMI Toyota Sienna Chassis

Toyota Sienna LE (FWD or AWD)

## Seating Flexibility

### Seating for up to 6\*

Single or dual mid-row seating option allows up to 6 passenger occupancy. Flip-up seat is easily locked in place to accommodate wheelchair passengers.

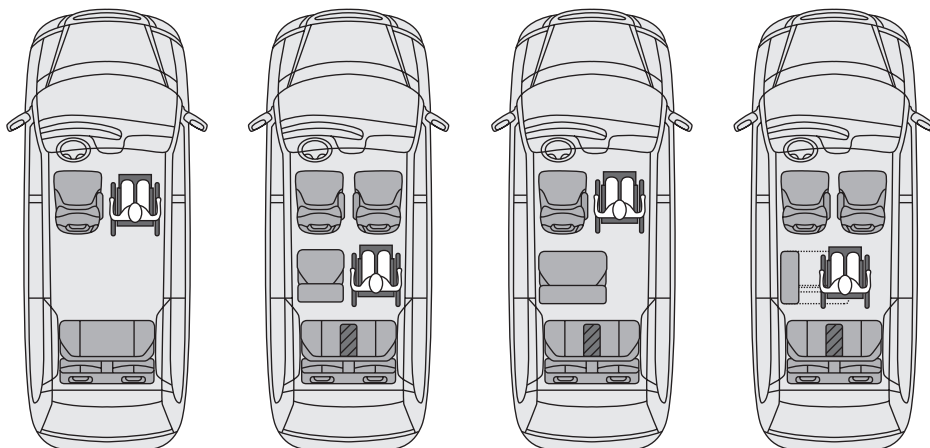
### Standard Features

1000 lb ramp capacity

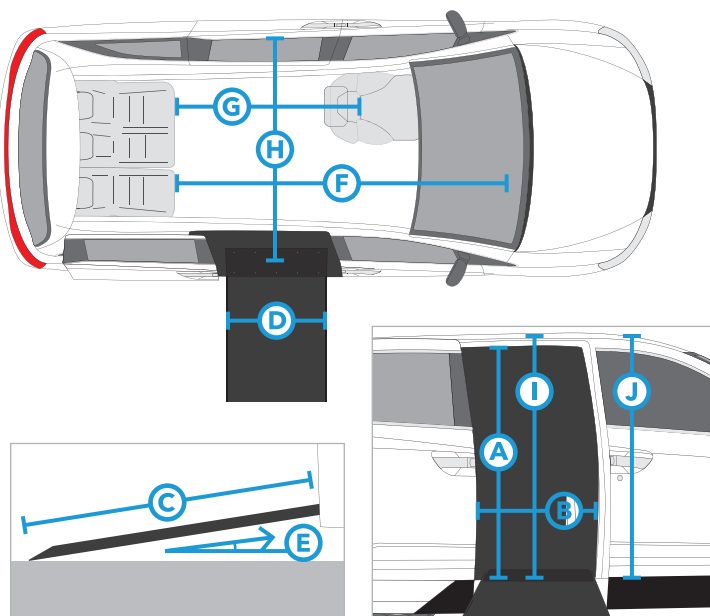
### Warranties

3 year / 36,000 mile conversion

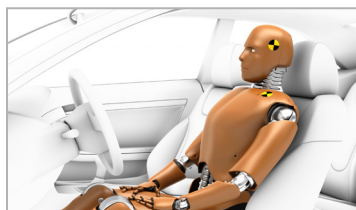
7 year structural (from rust-through corrosion)



## Vehicle Specifications



VMI TOYOTA SIENNA ADA NORTHSTAR E		
<b>(A)</b>	Door Opening Height (sliding passenger)	56.6"
<b>(B)</b>	Door Opening Width	30"
<b>(C)</b>	Ramp Length (angled ramp and transition plate)	65.4"
<b>(D)</b>	Ramp Width (usable)	30"
<b>(E)</b>	Ramp Angle	11°
	Ramp Capacity	1000 lbs
<b>(F)</b>	Floor Length Overall	86"
<b>(G)</b>	Floor Length Behind Front Seats	56"
<b>(H)</b>	Floor Width at Mid-Row (no mid-row seat)	59.75"
<b>(I)</b>	Interior Height at Center Position	59"
<b>(J)</b>	Interior Height at Front Position (w/o sunroof)	61"
	Ground Clearance (exhaust)	5.6"
	Overall Vehicle Height (with roof rails)	77.75"



### 100% Crash Tested

Meets or exceeds all Federal Motor Vehicle Safety Standards governed by NHTSA  
(National Highway Traffic Safety Administration).



### MQAP Certified

Fully meets compliance requirement standards instituted by the National Mobility Equipment Dealers Association for manufacturer quality assurance.

\*The FWD Toyota Hybrid may accommodate 6 passengers with optional dual mid-row seat. The maximum seating capacity for AWD Toyota Hybrid is 5 passengers and will require seat reduction kits. Specifications apply to the VMI Toyota Sienna ADA Northstar E conversions. Measurements may vary based on vehicle trim levels and environmental factors. To ensure best vehicle fit, please visit with your local dealer to confirm vehicle measurements prior to purchase. All information is subject to change without notice.

© Vantage Mobility International. All rights reserved.

9/22/21



844-VMI-4ADA • vmi4ADA.com • 5202 S 28<sup>th</sup> Place Phoenix, AZ 85040  
(864-4232)