

# Item 5-1. Pavement & Curb Rehabilitation Project – Marin Ave Phase 2

Presentation on Potential Tree Removals

# Summary

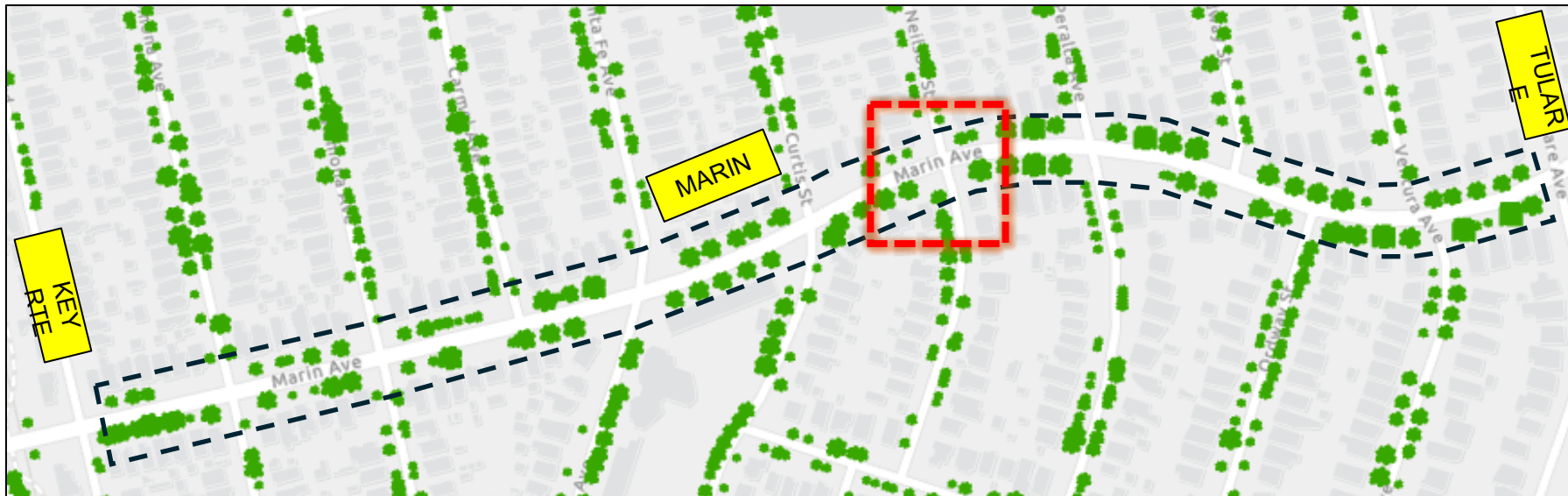
- Presentation on Marin Avenue Phase 2
  - Explain measures taken on project to minimize tree impacts
  - Potential tree removals identified during design
- No tree removals being proposed by staff at this meeting.  
Before any actual tree removal, staff will return to PROS with update

# Marin Avenue Paving Project

- Streetscape Project
  - Pavement Rehabilitation
  - Stormwater Drainage Rehabilitation
  - Traffic Signal Renewal
  - Pedestrian and Bicycle Safety Improvements
  - Intersection Safety Lighting **(Bid Alternate)**
- Challenges to project paving and curb ramp design
  - Marin Avenue Pavement & Curb Ramp Rehabilitation Project Report, Dated April 2025
- Significant attention to interaction of storm flow and curb ramps

# Marin Avenue Paving Project

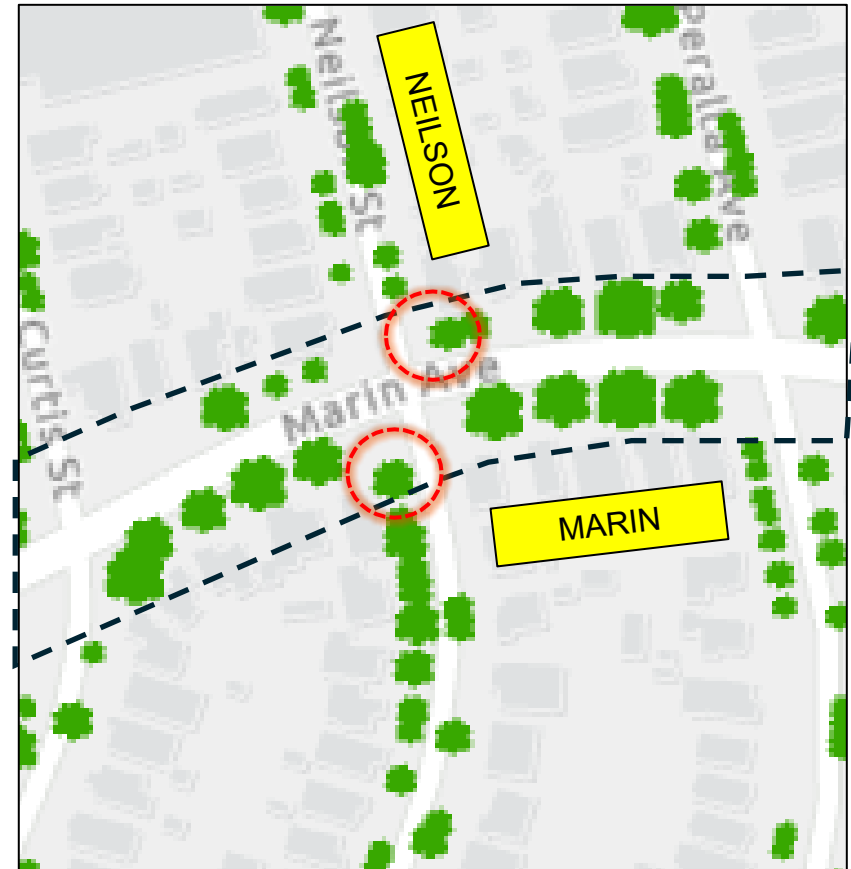
- 106 Street Trees within Project Limits
- Corner sharpened & increased sidewalk space/reduced impacts to existing trees
- Design included measures to avoid impacts to trees:
  - Adjusting location of new infrastructure
  - Curves at locations of sidewalk repair
  - Tree Protection





# Marin Avenue Paving Project

- Two trees identified for potential removal:
  - Tree ID #2824 (at 1498 Marin)
  - Tree ID #1639 (at 1501 Marin)



# Tree ID #2824

Liquidambar 18" DBH

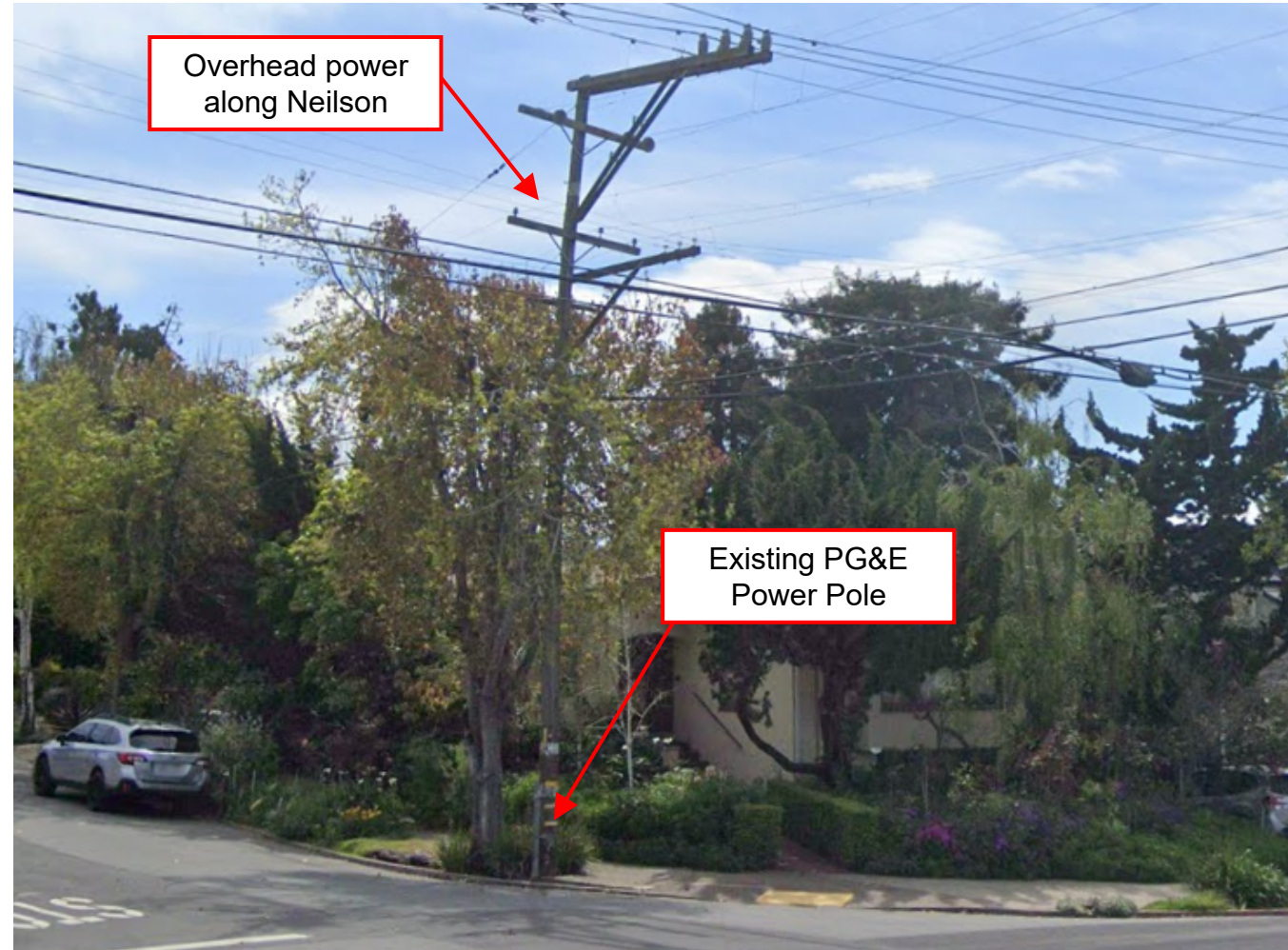
Tree Condition: **Poor**

Location: 1498 Marin (on Neilson)



March 2025

# Tree ID #2824 (at 1498 Marin)





# Tree ID #2824 (at 1498 Marin)



Additional Concerns:  
Epicormic sprouting,  
Marcescent over-winter  
leaves

Main stem  
wound and  
decay

Large root plate  
with extensive  
visible decay





- 
- Storm drain graded at a low point; unable to move without negatively affecting drainage at curb ramp
- Existing PG&E Power Pole
- Reversing gutter to create artificial low point for local capture

# Tree ID # 1639

London Plan Tree 12" DBH

Tree Condition: **Fair**

Location: 1501 Marin

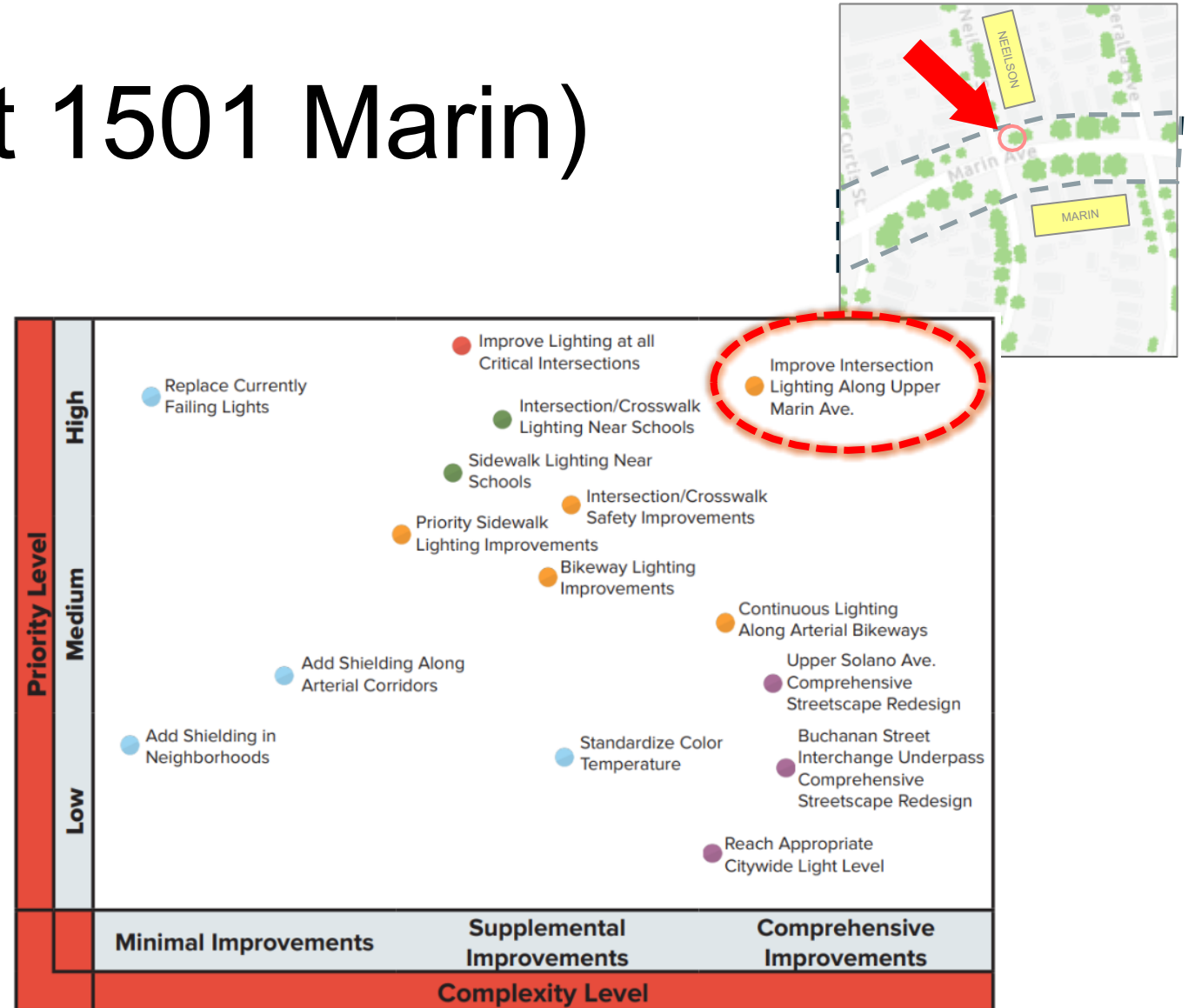


July 2024



# Tree ID #1639 (at 1501 Marin)

- Background:
  - 2023 Citywide Streetlight Evaluation
- Marin Avenue
  - Low light
  - Unevenly lit
  - Safety concerns
- Upper Marin Avenue Intersection Lighting High Priority



# Tree ID #1639 (at 1501 Marin)

- Specific measurements and study performed at Neilson/Marin



Tree #1639

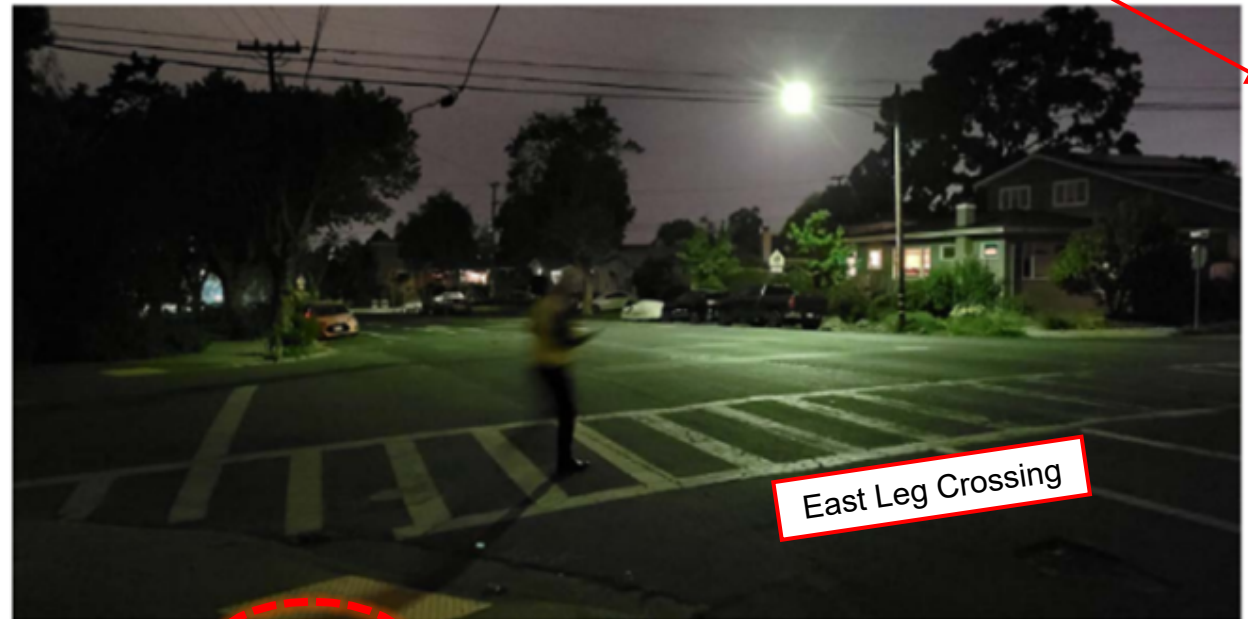


SITE PHOTO: DAY



SITE PHOTO: NIGHT

Tree #1639



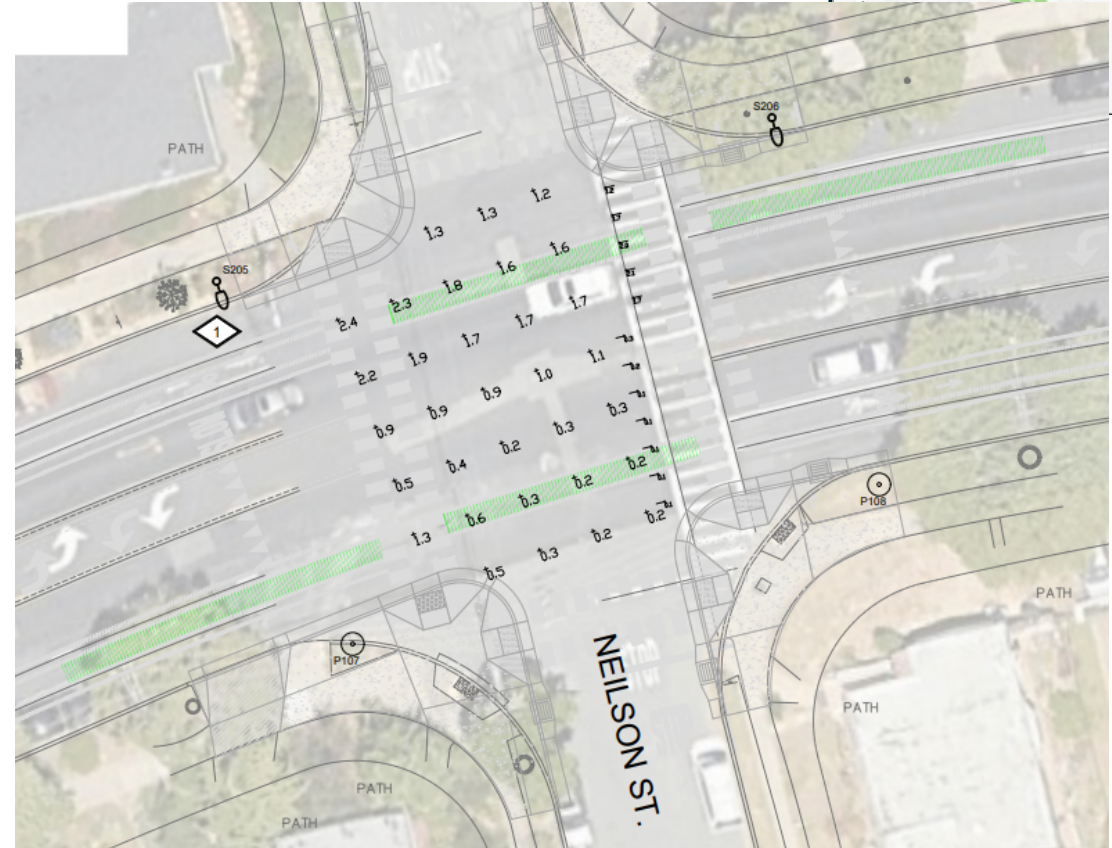
SITE PHOTO: POOR



# Tree ID #1639 (at 1501 Marin)

- Site specific design through photometric studies

Right quality  
Right level  
Right location



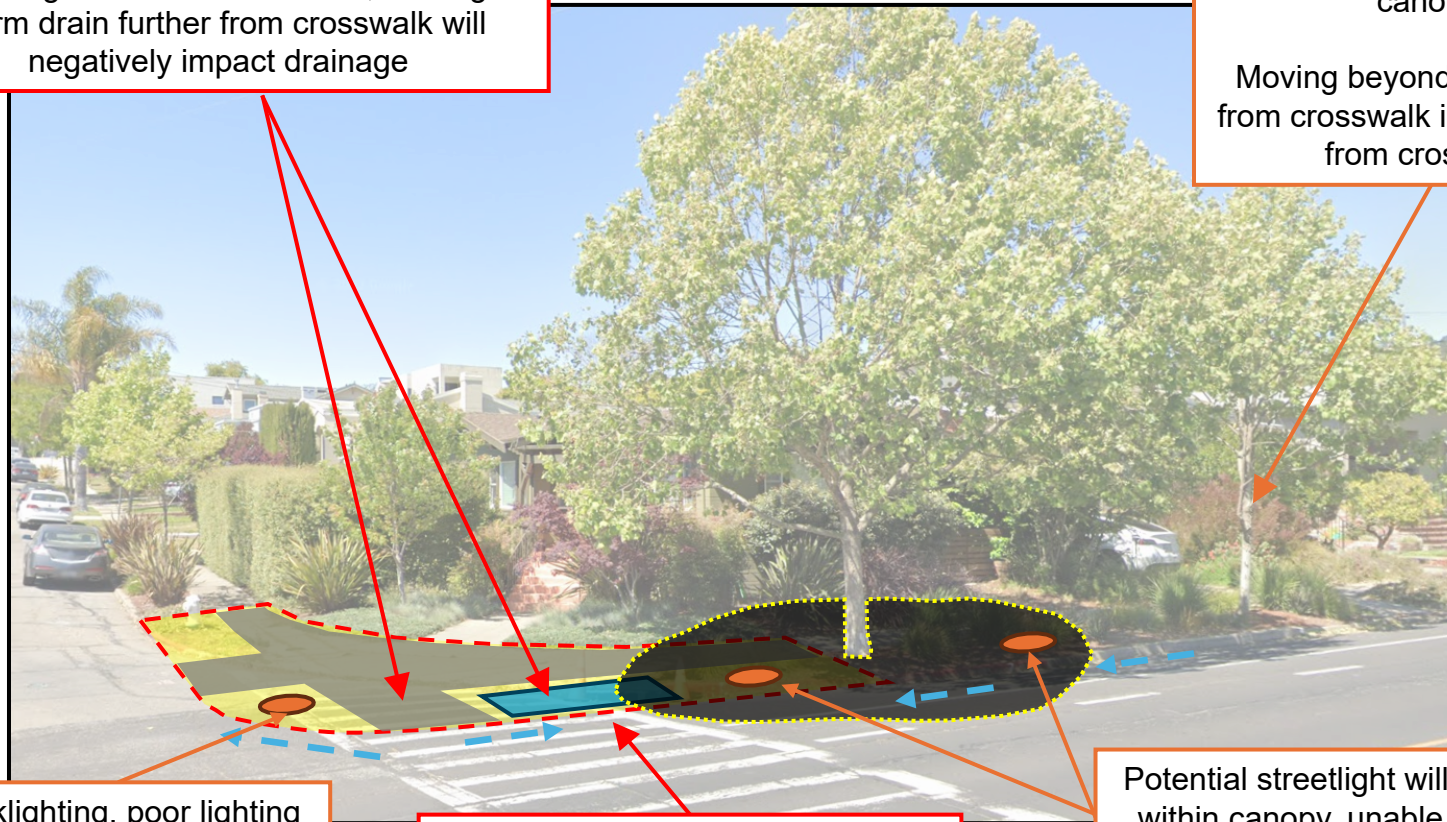
# Tree ID #1639 (at 1501 Marin)



Storm drain & curb ramp prevent moving streetlight closer to crosswalk; moving storm drain further from crosswalk will negatively impact drainage

Second tree prevents moving streetlight further east out of canopy.

Moving beyond second tree from crosswalk is too far away from crosswalk



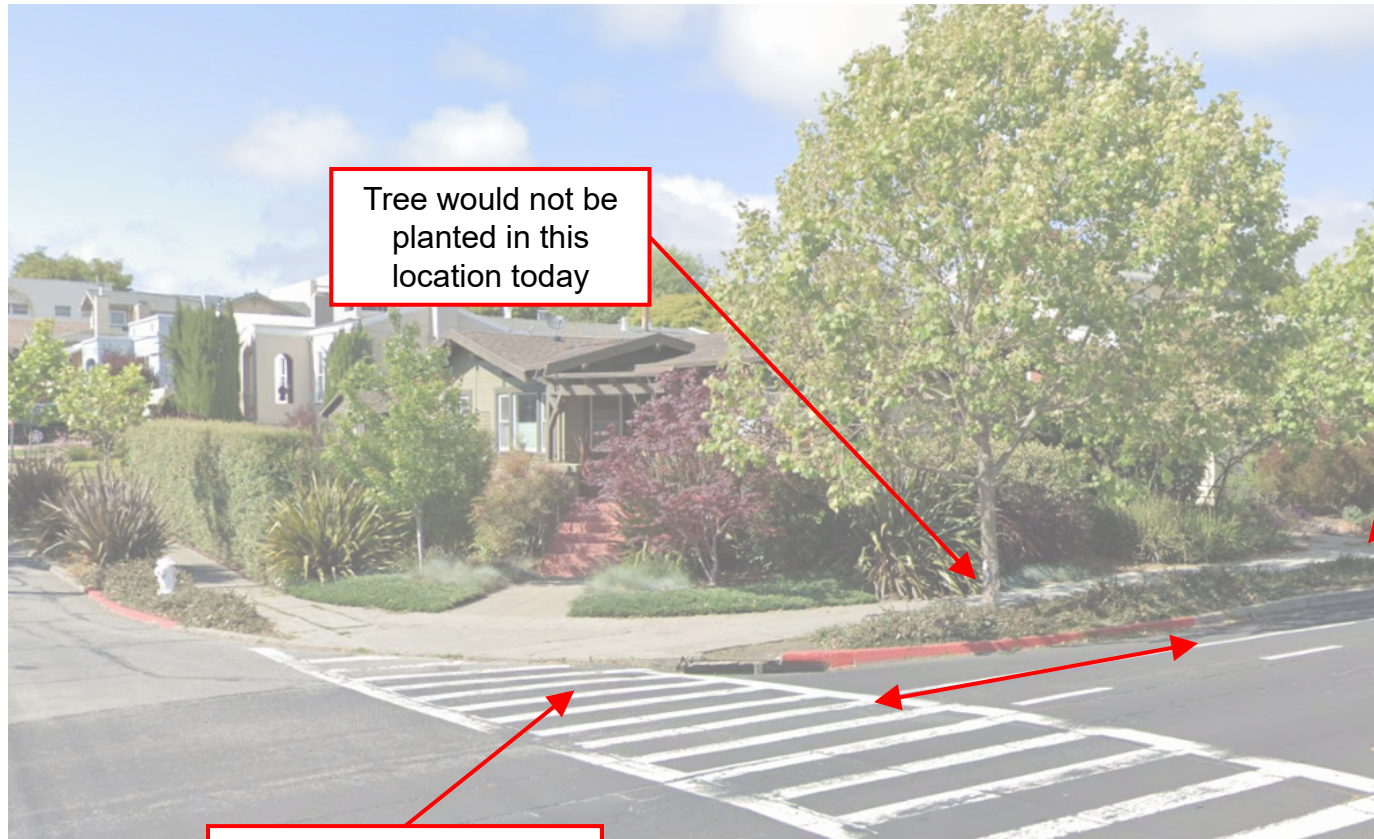
Backlighting, poor lighting condition persists

Reversing gutter to create artificial low point for local capture

Potential streetlight will be within canopy, unable to adjust on either side



# Tree ID #1639 (at 1501 Marin)



Tree would not be  
planted in this  
location today

Adjacent Tree 1638  
(Original Camphor location)

Crosswalk remaining in  
same general location to  
continue path of travel

# Final Notes

- Before any actual tree removal, staff will post trees and return to PROS for update & tree removal
- Questions