



---

# **Sidewalk Repair Program**

## **Prioritization Criteria Update & Phase 9 Scope**

Transportation Commission  
April 25, 2024

# Agenda

---

- I. Program Update
- II. Prioritization Criteria Update
- III. Phase 9 Scope



---

# **Sidewalk Repair Program**

## Program Update

# Program Update

---



- Total of **176 locations** repaired in Phase 5 through Phase 8 (2022 & 2023)
- Overall, **404 locations** repaired in Phase 1 through Phase 8 (2018 – 2023)

# Repair Locations Map





---

# **Sidewalk Repair Program**

## Prioritization Criteria Update

# Repair Scoping

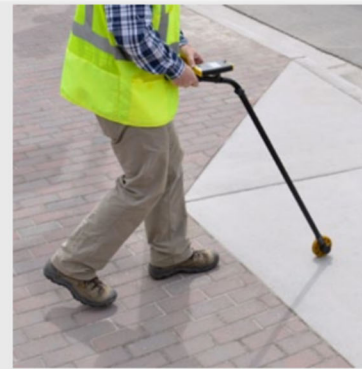
- Beneficial Designs contracted for sidewalk survey (completed 2021)
- Results used to build comprehensive Citywide GIS database
  - No Best Path of Travel (NoBPOT):  $\geq 2$  deficiencies at single location
  - Non-planar Pedestrian Access Route (NoPAR): upheaval sites
  - Vertical & linear discontinuities: typical raised offset
  - Horizontal openings: “holes” in the sidewalk



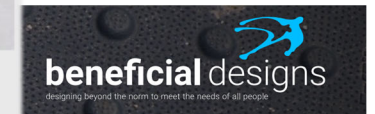
assessment **cart**



measure **height**



measure **length**





# Proposed Prioritization Criteria Update

---

- Five features used to define upcoming repair scopes
- NoBPOT has limited attribute data outside of “critical” distinction
- After data query, locations were field reviewed by staff

Feature	Data Query / Criteria
NoBPOT	- Classified with “unstable” attribute <b>OR</b> - Higher severity noted during measurement
NoPAR	>5% grade
Vertical Discontinuity	≥2” offset
Linear Discontinuity	≥2” offset
Horizontal Opening	≥2” offset / “hole” depth



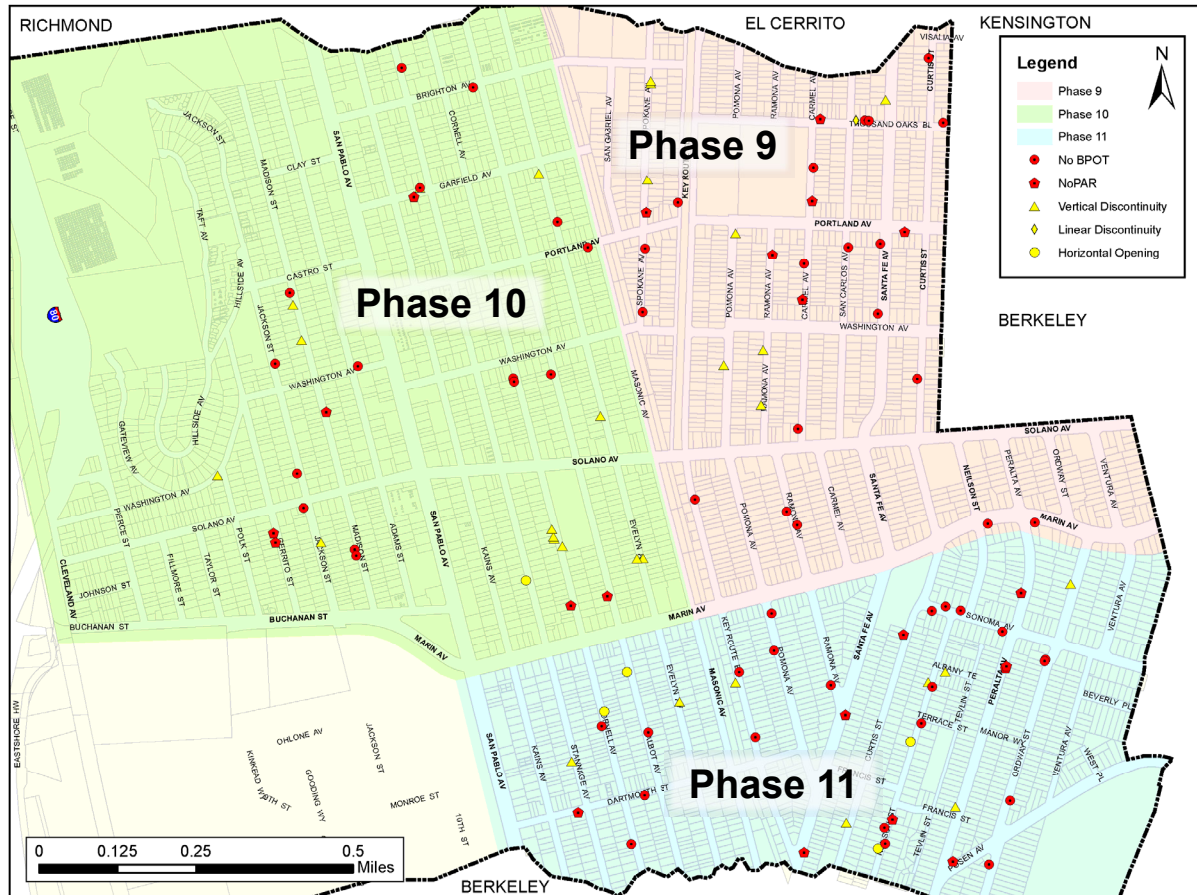
# Proposed Prioritization Criteria Update

---

- Breakdown of locations after query and field review:

Category	Number of Locations
NoBPOT	55
NoPAR	21
Vertical Discontinuity	29
Linear Discontinuity	1
Horizontal Opening	5
<b>TOTAL</b>	<b>111</b>

# Proposed Prioritization Criteria Update



- Phased approach
- 3-year timeline
  - Phase 9 = 2024
  - Phase 10 = 2025
  - Phase 11 = 2026
- Complete repairs by Fall 2026



---

# **Sidewalk Repair Program**

## **Phase 9**

# Phase 9 Scope

---

- Repair locations identified per updated prioritization criteria
- Repair outstanding Marin Avenue “critical” NoBPOT issues
- Repair recent special access needs issue(s)

Category	Number of Locations
Critical NoBPOT	3
NoBPOT	19
NoPAR	6
Vertical Discontinuity	8
Linear Discontinuity	1
Special Access Needs	1
<b>TOTAL</b>	<b>38</b>

# Phase 9 Repair Locations

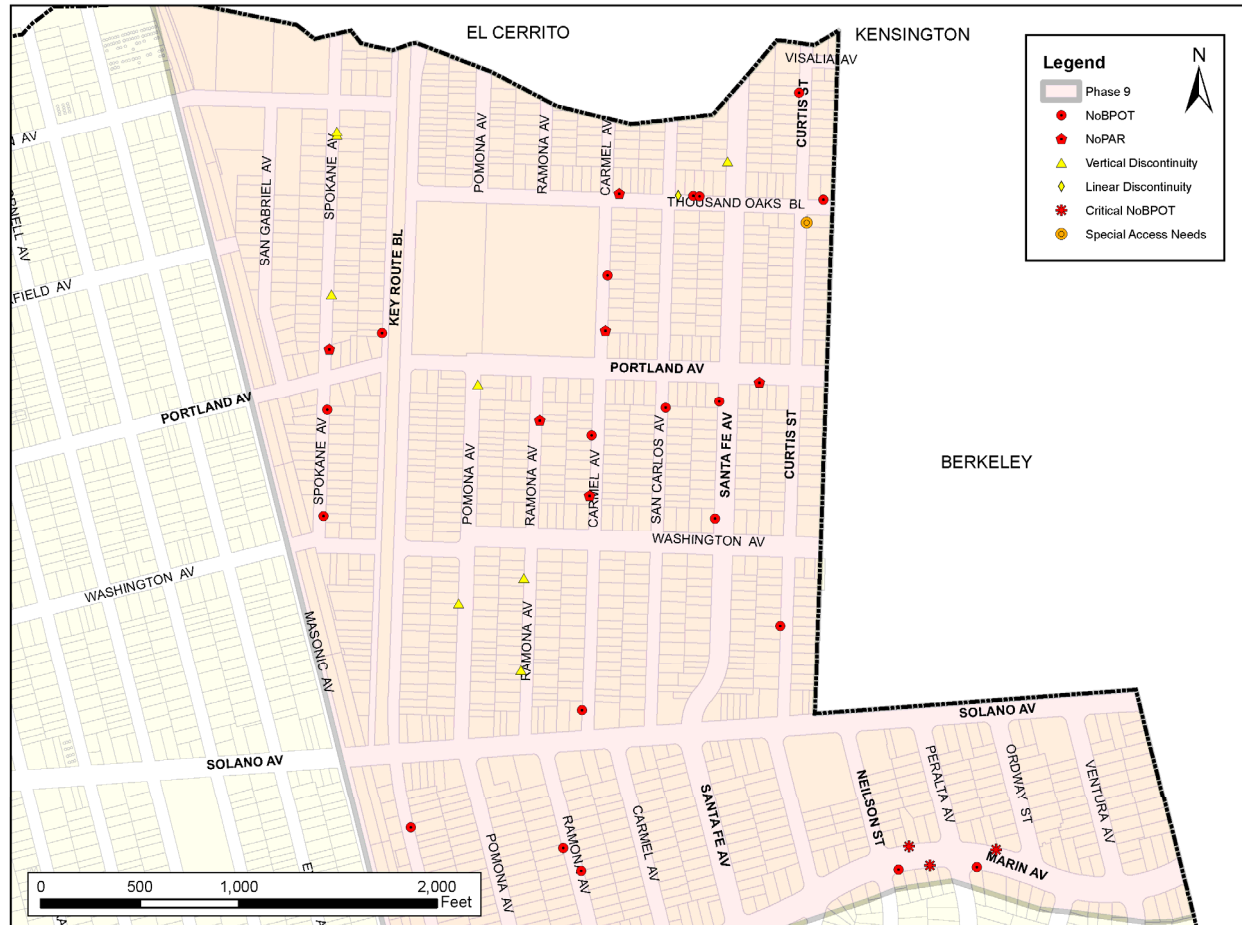
---

- 621 Carmel
- 639 Carmel
- 712 Carmel
- 728 Carmel
- 512/514 Curtis
- 601 Curtis\*
- 824 Curtis
- 666/668 Key Route / 1271 Portland
- 915 Key Route
- 1500 Marin
- 1505/1507 Marin\*\*
- 1506 Marin\*\*
- 1550 Marin
- 1555 Marin / 930 Ordway\*\*  
(on Marin)
- 818 Pomona
- 1263 Portland (on Spokane)
- 1312 Portland (on Key Route)
- 1448 Portland (on Santa Fe)
- 1454 Portland
- 713 Ramona
- 810 Ramona
- 834 Ramona
- 921 Ramona
- 928 Ramona
- 707 San Carlos
- 520 Santa Fe
- 1391 Solano (on Carmel)
- 605 Spokane (x2)
- 655 Spokane
- 705 Spokane
- 739 Spokane
- 1427 Thousand Oaks
- 1441 Thousand Oaks
- 1443 Thousand Oaks
- 1445 Thousand Oaks
- 1525 Thousand Oaks
- 1447 Washington (on Santa Fe)

\* *Special access needs complaint*

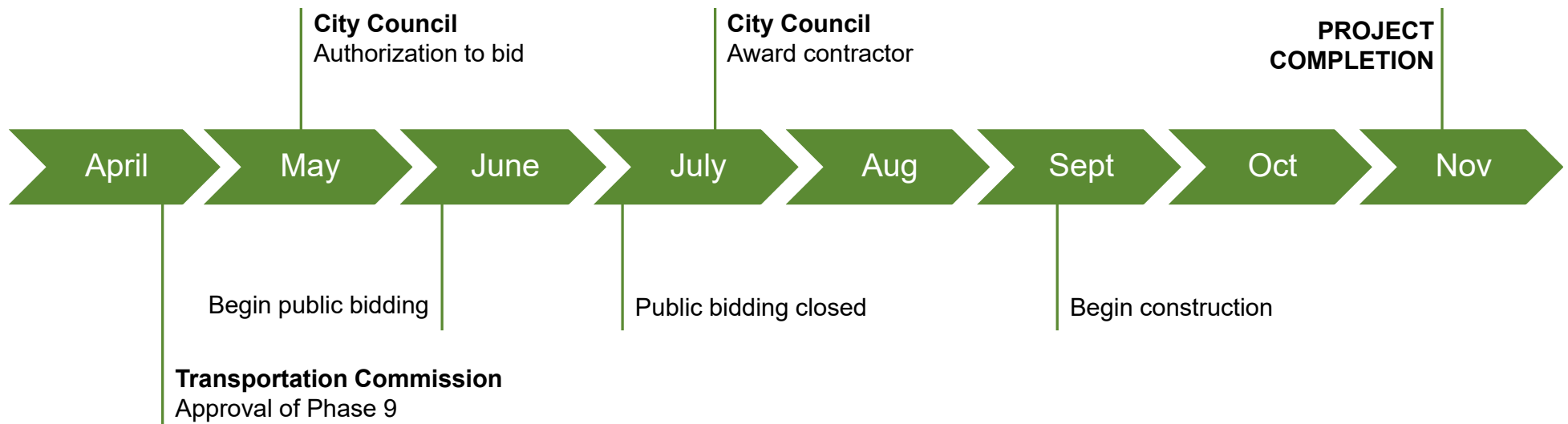
\*\* *Critical NoBPOT repair*

# Phase 9 Repair Locations



# Phase 9 Schedule

---





# Looking Forward...

---

- One repair phase per year (planned through 2026)
- 5-zone shaving cycle completed by 2025
- Next sidewalk survey scheduled for 2025

# Staff Recommendations

---

That the Transportation Commission...

1. Recommend that Council authorize construction of the Phase 9 locations
2. Conditionally recommend the Phase 10 & 11 locations and the 2024-2026 repair schedule
  - Staff to prepare memo for Commission prior to Council authorization for Phase 10 & 11, which will include repair locations and progress update
  - Staff still required to notify property owners before meeting

# QUESTIONS?

