

# RESTORATION PROJECT OVERVIEW

This project has **four distinct phases** of restoration work, each separated by a removals phase of work completed by another contractor:

**Phase 1 Restoration - Pilot Phase** will identify and protect native plant understory areas that will be designated as **Priority Native Plant Stands (PNPSs)**. Restoration phase contractors will flag PNPSs prior to the initiation of Removal phases. Phase 1 will also field test replacement tree species.

**Phase 3 Restoration - Exterior** will primarily restore Open Oak Woodland with Herbaceous Understory.

**Phase 5 Restoration - Interior** will restore additional areas of Open Oak Woodland with Herbaceous Understory as well as areas of Native Grasslands and Oak Woodlands and Shrubs.

**Phase 7 Restoration - Monarch Management Area** will restore habitat within the Monarch Management Area.

These diagrams are for use in support of the Implementation Plan report and for discussion with City representatives and the public. Contract documents will be issued separately for bidding.

## Phase 1 Restoration - Pilot Phase

- Areas A, B, C1-2, D1-4: pre-removal work
- Areas H, J2: initiate field test of replacement trees

## Phase 2 Removals - Exterior

## Phase 3 Restoration - Exterior

- Areas A, B, C1-2, D1-3: post-removal restoration
- Areas E, F, G

## Phase 4 Removals - Interior

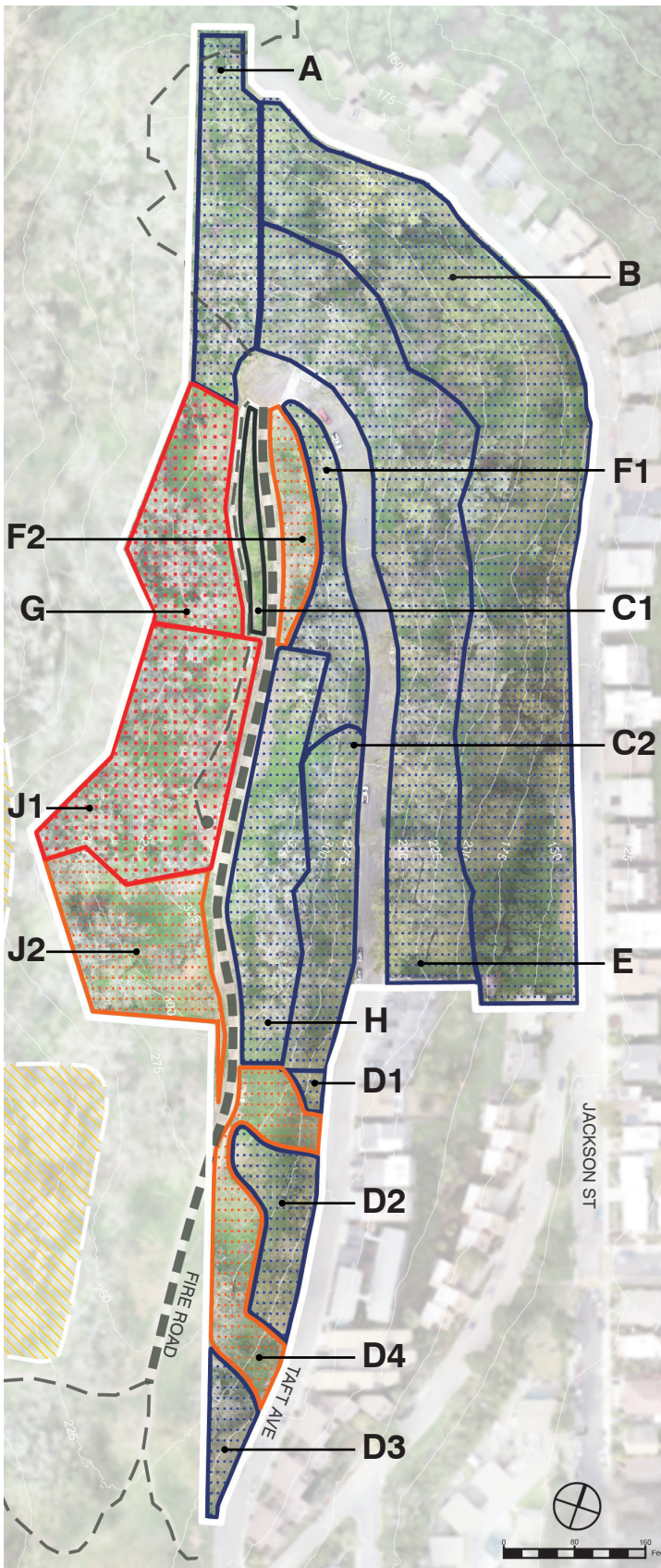
## Phase 5 Restoration - Interior

- Areas E, F1-2, G, D4: post-removal restoration
- Areas H, J1-2: pre-removal plant salvage

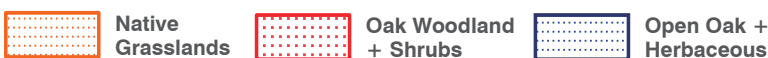
## Phase 6 Removals - Monarch Management Area

## Phase 7 Restoration - Monarch Management Area

- Areas H, J1-2: post-removal restoration
- Areas H, J1-2: replacement tree planting



### TARGET HABITAT BY AREA



# PHASE 1 RESTORATION

## PILOT PHASE

### LEGEND

-  Monarch Management Area
-  Priority Native Plant Stand (PNPS)
-  Field Trial Tree Locations
-  Existing Eucalyptus Trees (location approx.)

- Initiate contract grow with nursery.
- Install temporary irrigation system utilizing tanks at the end of Taft St. and at the top of Albany Hill. Locations detailed in construction drawings.

### AREA A, B, C1-2, D1-4

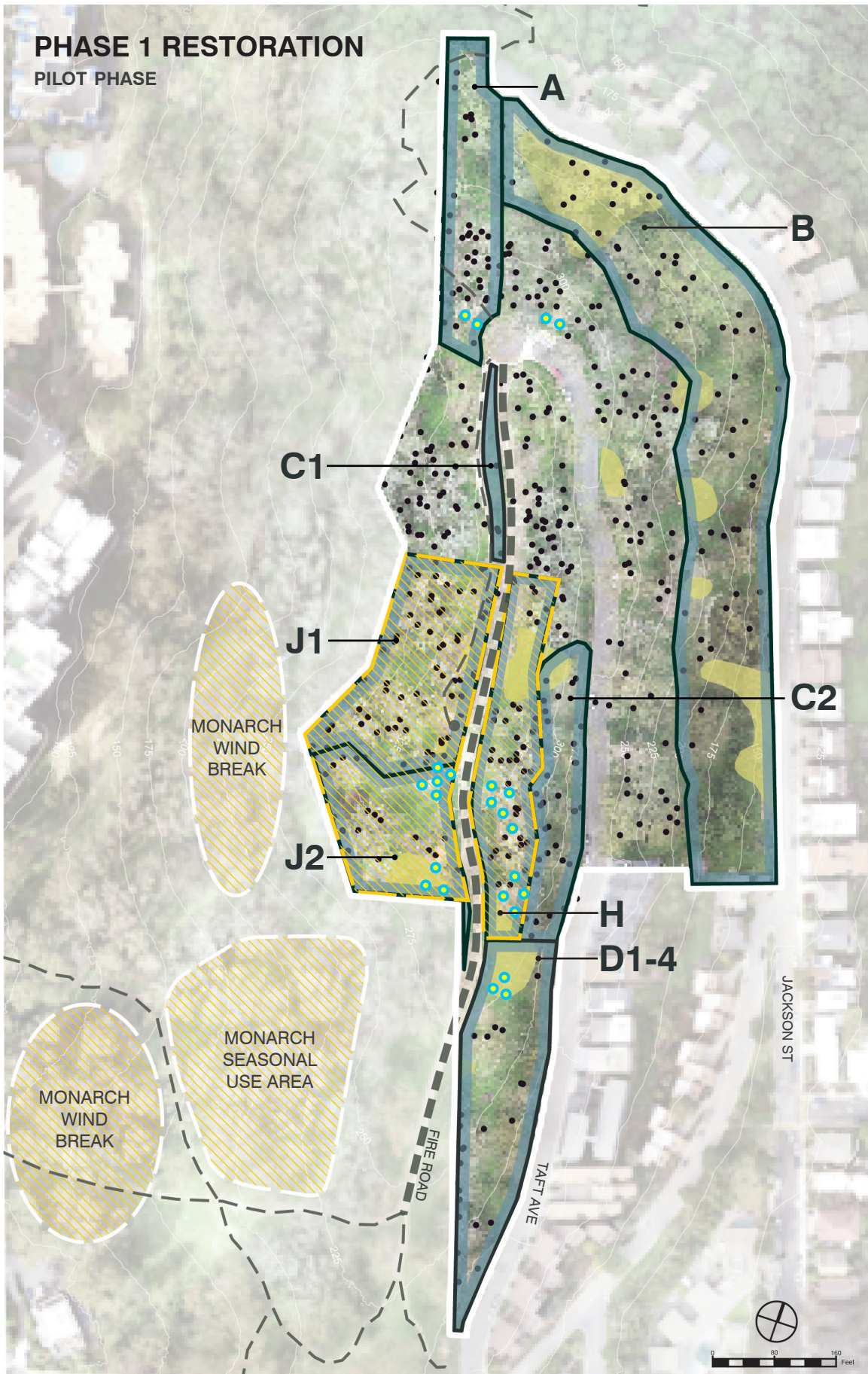
- Pre-removal plant salvage
- Identify and flag priority native plant stands
- Trail and oak protection
- Identify and flag removal access routes
- Area D only: plant field trial trees

### AREA H, J2

- Plant field trial trees
- Pruning/limbing of Eucalyptus near trails

### AREA J1

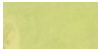

- Pruning/limbing of Eucalyptus near trails



See plan set and technical specifications for details.

# PHASE 3 RESTORATION EXTERIOR

## LEGEND

-  Monarch Management Areas
-  Priority Native Plant Stand (PNPS)
-  Field Trial Tree Locations
-  Existing Eucalyptus Trees (location approx.)

## TARGET HABITATS

-  Open Oak + Herbaceous

## AREA A, B, C2, D1-3

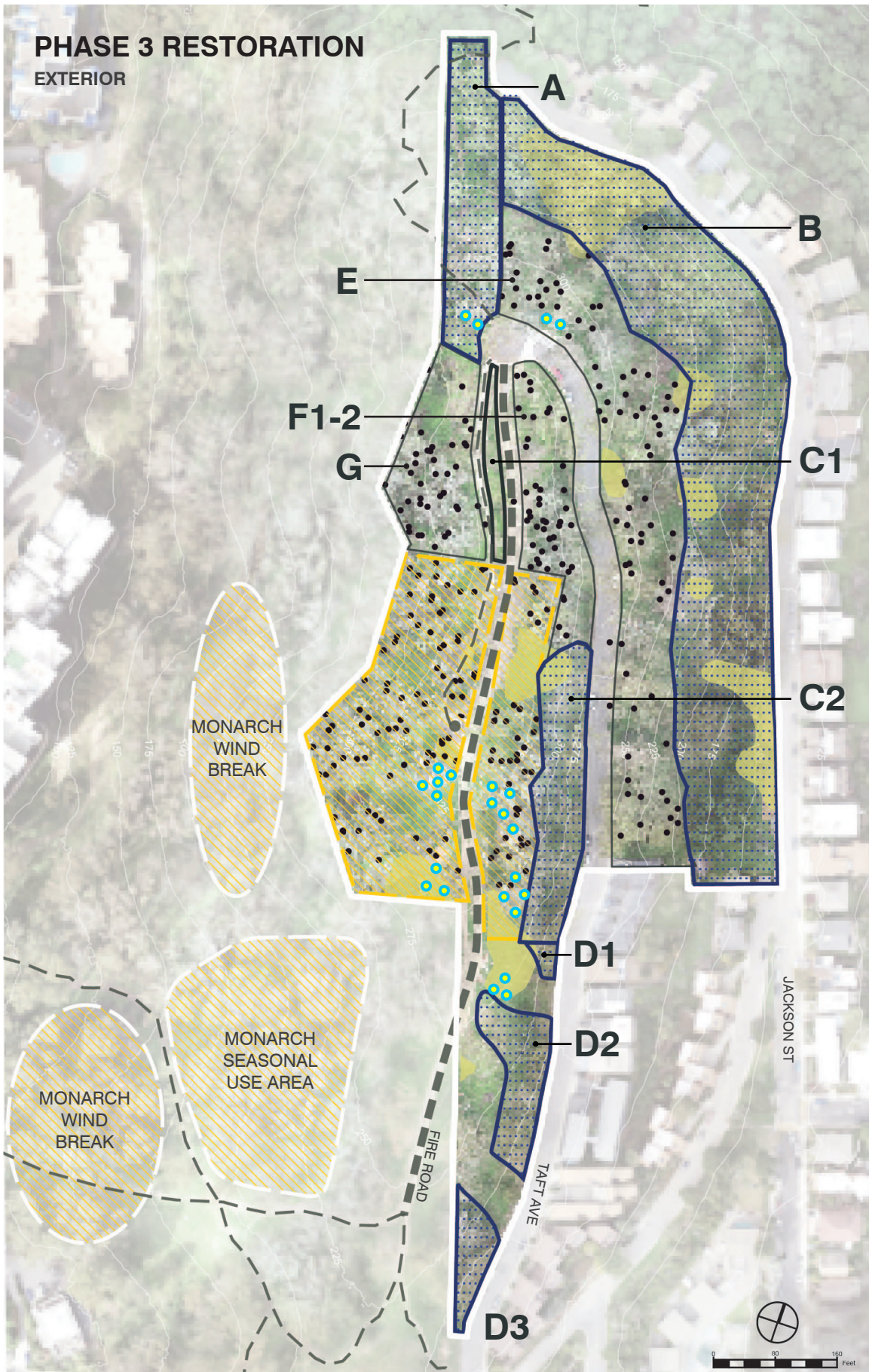
- Mulch for invasive control
- Reinstall salvaged plants to original areas
- Fascines on slope to help with erosion control
- Native plant patches
- Oak tree planting

## AREA C1

- Mulch for invasive control
- Oak tree planting

## AREA E, F1-2, G

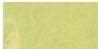

- Pre-removal plant salvage



See plan set and technical specifications for details.

# PHASE 5 RESTORATION INTERIOR

## LEGEND

-  Monarch Management Area
-  Priority Native Plant Stand (PNPS)
-  Phase 1 & 3 Restoration
-  Field Trial Tree Locations
-  Existing Eucalyptus Trees (location approx.)

## TARGET HABITATS

-  Oak Woodland + Shrubs
-  Native Grasslands
-  Open Oak + Herbaceous

## AREA D4

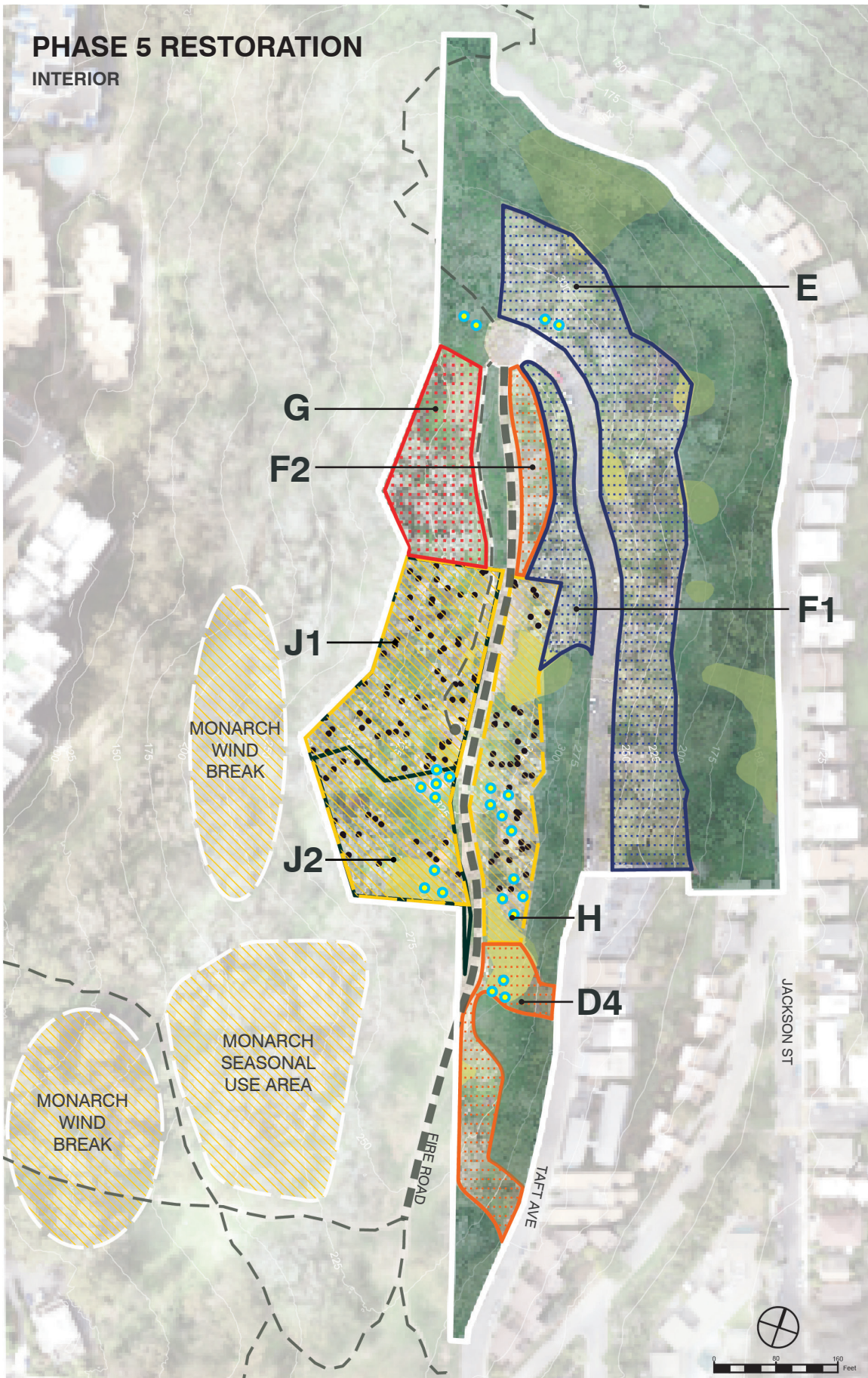
- Mulch for invasive control
- Fascines on slope to help with erosion control
- Native plant patches

## AREA E, F1-2, G

- Mulch for invasive control
- Reinstall salvaged plants to original areas
- Fascines on slope to help with erosion control
- Native plant patches
- Oak tree planting

## MONARCH MANAGEMENT AREA (AREA H, J1-2)


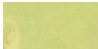



- Pre-removal assessment



See plan set and technical specifications for details.

# PHASE 7 RESTORATION MONARCH MANAGEMENT AREA

## LEGEND

-  Phase 1, 3, & 5 Restoration
-  Priority Native Plant Stand (PNPS)
-  Field Trial Tree Locations
-  Replacement Tree Locations
-  Existing Eucalyptus Trees (location approx.)

## TARGET HABITATS

-  Oak Woodland + Shrubs
-  Native Grasslands
-  Open Oak + Herbaceous

## AREA H, J1-2

- Mulch for invasive control
- Native plant patches
- Replacement tree planting
- J1 only: Oak tree planting

## REPLACEMENT TREE PLANTING

- Replacement tree species selected from field trials to be planted in groves at spacing to provide monarch habitat at maturity. Locations to be assessed after Phase 6 Removals and reviewed by City of Albany staff prior to installation.
- Trees shown in this phase assume stand survival at the start of Phase 7. Assessment in Phase 6 Removals may result in trees removed from Monarch Management Area (J1-2 and H).



See plan set and technical specifications for details.